

Wool Inspiration Card

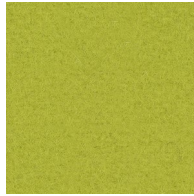
Divina 3
Divina MD
Divina Melange 3
Hallingdal 65
Hero 2
Remix 3
Steelcut Quartet
Steelcut Trio 3

plural:

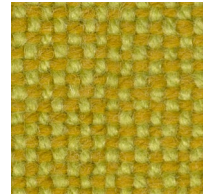
kvadrat



Divina 3
856



Divina 3
936



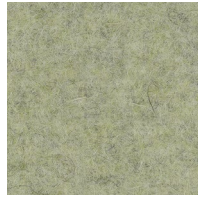
Hallingdal 65
420



Hero 2
912



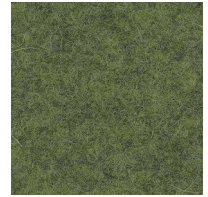
Divina 3
956



Divina MD
913



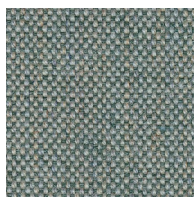
Hero 2
962



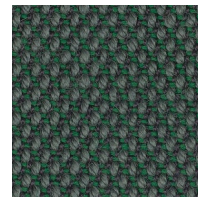
Divina MD
943



Divina MD
843



Remix 3
906



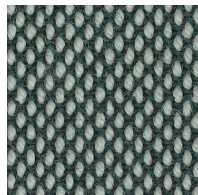
Steelcut Trio 3
966



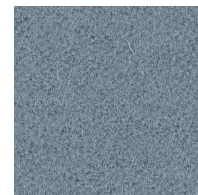
Hero 2
942



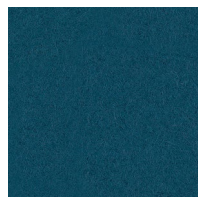
Divina Melange 3
821



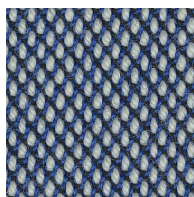
Steelcut Trio 3
916



Hero 2
732



Divina 3
893



Steelcut Trio 3
716



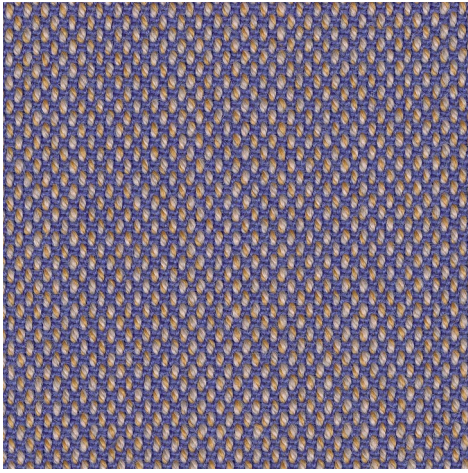
Hallingdal 65
764



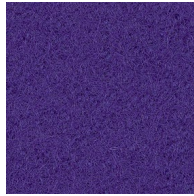
Divina Melange 3
757



Steelcut Quartet
764



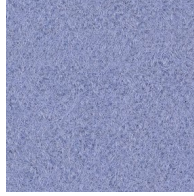
Steelcut Quartet
644



Hero 2
672



Hallingdal 65
563



Hero 2
622



Divina Melange 3
617



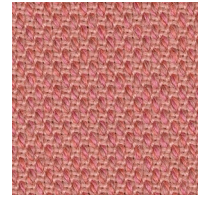
Divina 3
671



Hero 2
162



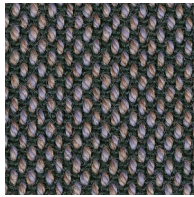
Remix 3
773



Steelcut Quartet
534



Divina MD
733



Steelcut Quartet
654



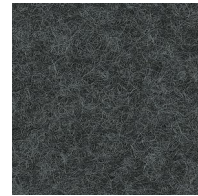
Hero 2
392



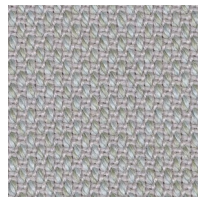
Hallingdal 65
130



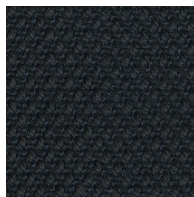
Remix 3
143



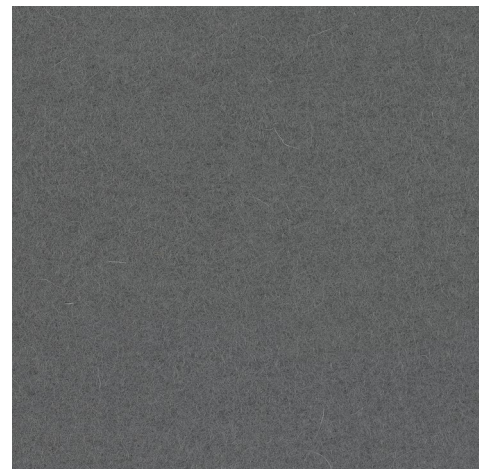
Divina Melange 3
170



Steelcut Quartet
114



Steelcut Trio 3
195



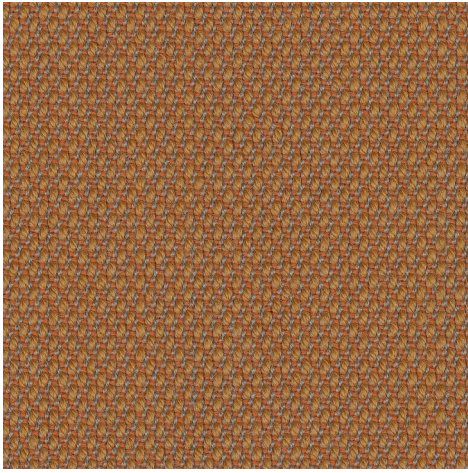
Divina 3
173



Divina MD
193



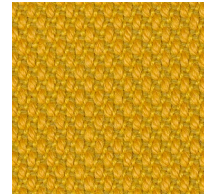
Hallingdal 65
368



Steelcut Trio 3
436



Hallingdal 65
590



Steelcut Trio 3
446



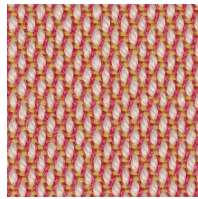
Divina Melange 3
557



Hero 2
422



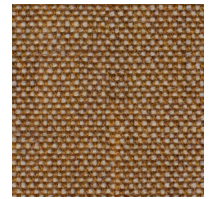
Hero 2
242



Steelcut Trio 3
515



Steelcut Quartet
414



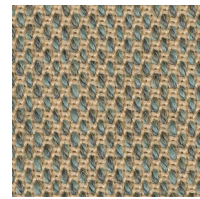
Remix 3
252



Hero 2
352



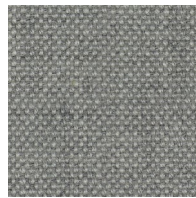
Remix 3
233



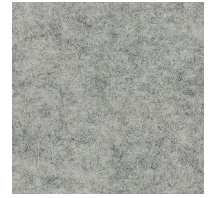
Steelcut Quartet
924



Divina MD
213



Remix 3
123



Divina Melange 3
120



Divina 3
944



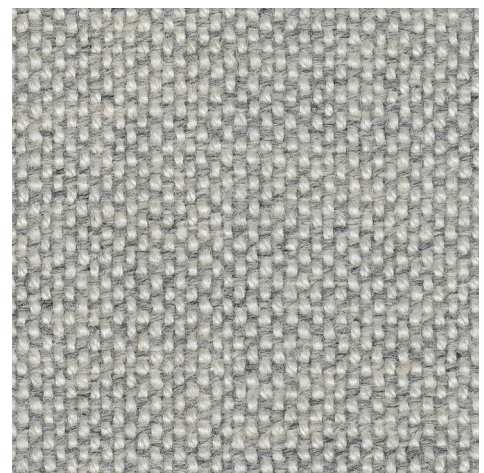
Divina MD
343



Divina Melange 3
227



Remix 3
362



Hallingdal 65
110

Divina 3

Designed by Finn Sködt
100% new wool

Direction: ↔

Width: approx. 150cm (59")

Abrasion: 45,000 Martindale

[Click here for full Technical Specifications.](#)

Hero 2

Designed by Patricia Urquiola
97% new wool, 3% recycled nylon

Direction: ↕

Width: approx. 140cm (55")

Abrasion: 45,000 Martindale

[Click here for full Technical Specifications.](#)

Divina MD

Designed by Finn Sködt
100% new wool

Direction: ↔

Width: approx. 150cm (59")

Abrasion: 45,000 Martindale

[Click here for full Technical Specifications.](#)

Remix 3

Designed by Giulio Ridolfo
90% new wool, worsted, 10% nylon

Direction: ↔

Width: approx. 140cm (55")

Abrasion: 100,000 Martindale

[Click here for full Technical Specifications.](#)

Divina Melange 3

Designed by Finn Sködt
100% new wool

Direction: ↔

Width: approx. 150cm (59")

Abrasion: 45,000 Martindale

[Click here for full Technical Specifications.](#)

Steelcut Quartet

Designed by Giulio Ridolfo
90% new wool, worsted, 10% nylon

Direction: ↕

Width: approx. 140cm (55")

Abrasion: 100,000 Martindale

[Click here for full Technical Specifications.](#)

Hallingdal 65

Designed by Nanna Ditzel
70% new wool, 30% viscose

Direction: ↕

Width: approx. 130cm (51")

Abrasion: 100,000 Martindale

[Click here for full Technical Specifications.](#)

Steelcut Trio 3

Designed by Frans Dijkmeijer & Giulio Ridolfo
90% new wool, worsted, 10% nylon

Direction: ↕

Width: approx. 140cm (55")

Abrasion: 100,000 Martindale

[Click here for full Technical Specifications.](#)

10^{year}
warranty



Quality and environmental system accreditation according to ISO 9001 and ISO 14001.

Contact and further information www.kvadrat.dk

US contact info: 1-800-620-9309