



plural:
Coated Fabrics

Carnegie



Boomerang Print 6954-1



Boomerang Print 6954-2



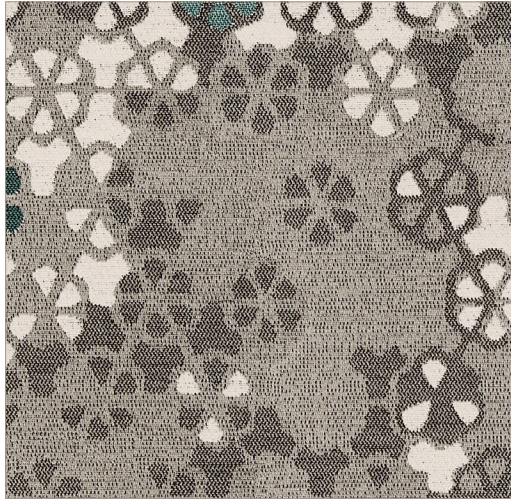
Boomerang Print 6954-3



Boomerang Print 6954-4



Boomerang Print 6954-5



Revolve Print 6972-101



6972-102



6972-103



6972-104



6972-105



Tartan Print 6016-101



Tartan Print 6016-101



Tartan Print 6016-101



Tartan Print 6016-101



Tartan Print 6016-101



Helix Print 6272-1



Helix Print 6272-2



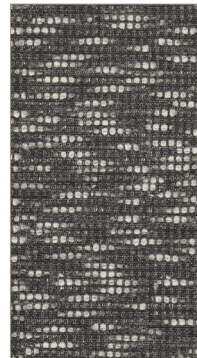
Helix Print 6272-3



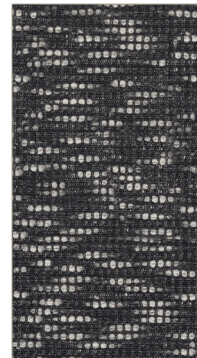
Helix Print 6272-4



Juno Print 6288-1



6288-2



6288-3



Botanic 6372-1



Botanic 6372-2



Botanic 6372-3



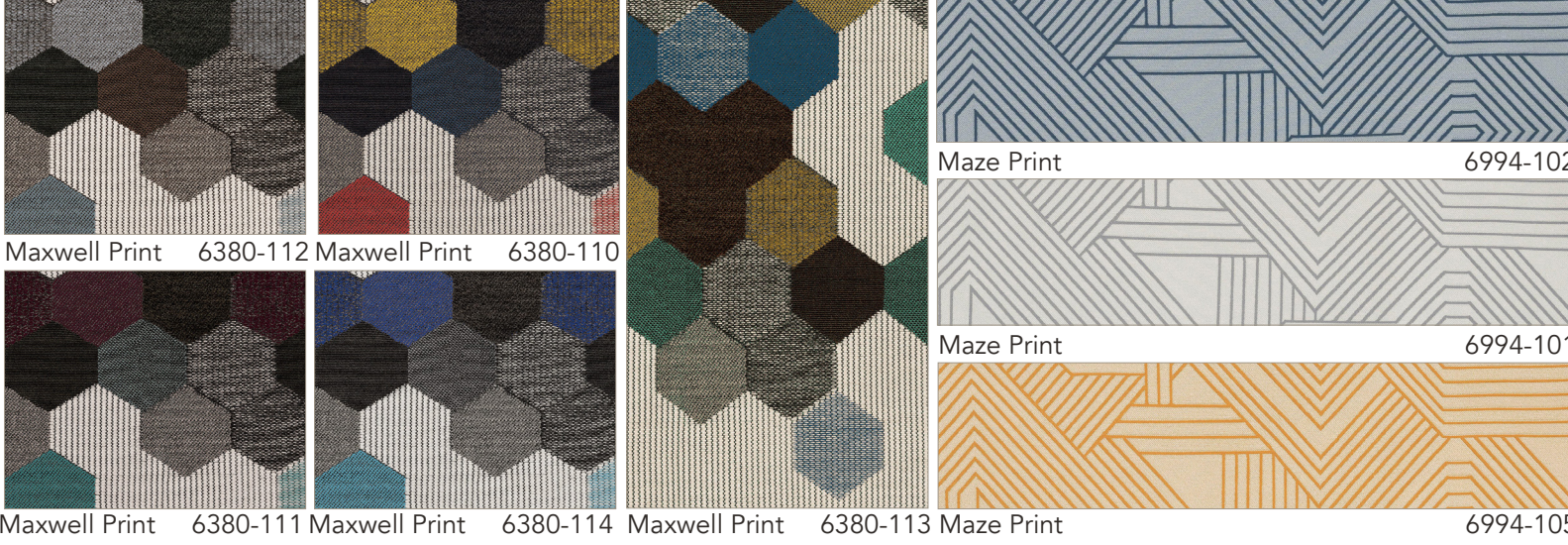
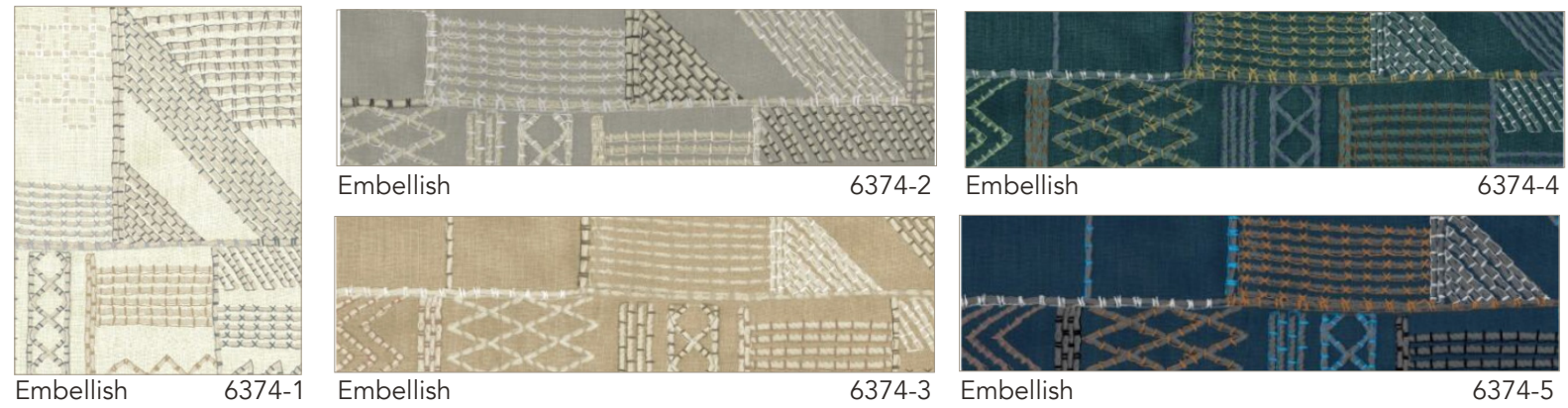
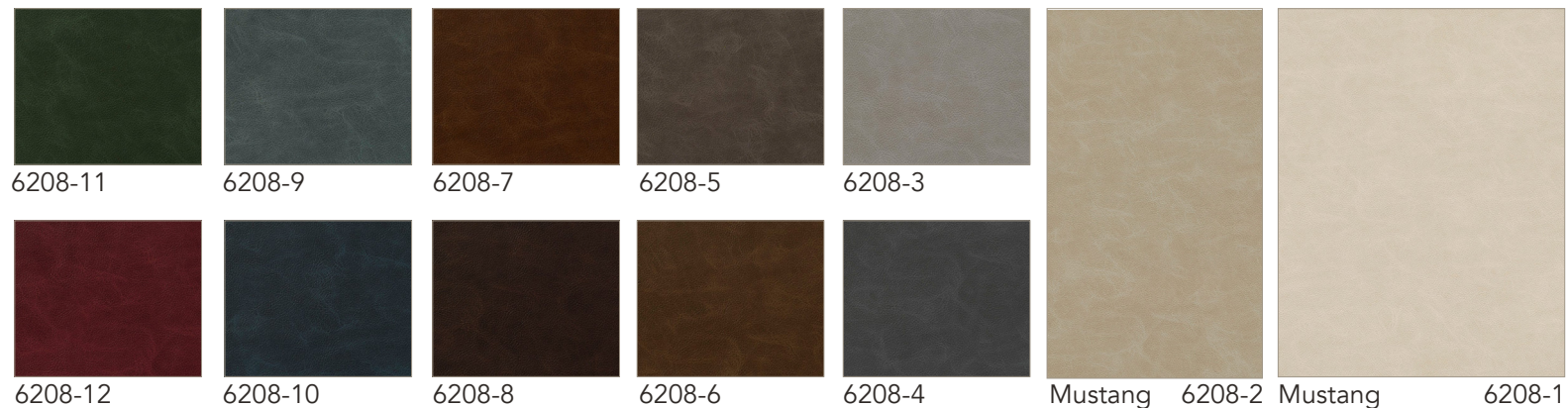
Botanic 6372-4



Botanic 6372-5



Botanic 6372-6



Additional Patterns + Colorways Available @ Carnegiefabrics.com

| Pattern | SKUS | Content | Abrasion Resistance** | Width | Cleaning Code* | Finish / Backing | Grade |
|----------------------|------|--|-----------------------|-------|----------------|-----------------------|-------|
| Botanic 6372 | 6 | Face: 95% CPU (Polycarbonate), 5% Silicone Back: 100% Polyester | 100,000 DRs | 54" | WS & BC | Finish-Free, Unbacked | F |
| Boomerang Print 6954 | 5 | Face: 71% Polyurethane (Polycarbonate), 29% Silicone Back: 100% Polyester | 250,000 DRs | 54" | WS & BC | Finish-Free, Unbacked | J |
| Embellish 6374 | 6 | Face: 95% CPU (Polycarbonate), 5% Silicone Back: 100% Polyester | 100,000 DRs | 54" | WS & BC | Finish-Free, Unbacked | F |
| Helix Print 6272 | 4 | Face: 71% Polyurethane (Polycarbonate), 29% Silicone Back: 100% Polyester | 250,000 DRs | 54" | WS & BC | Finish-Free, Unbacked | J |
| Juno Print 6288 | 3 | Face: 71% Polyurethane (Polycarbonate), 29% Silicone Back: 100% Polyester | 250,000 DRs | 54" | WS & BC | Finish-Free, Unbacked | J |
| Maxwell Print 6280 | 6 | Face: 71% Polyurethane (Polycarbonate), 29% Silicone Back: 100% Polyester | 250,000 DRs | 54" | WS & BC | Unbacked, Finish-Free | J |
| Maze Print 6944 | 6 | Face: 71% Polyurethane (Polycarbonate), 29% Silicone Back: 100% Polyester | 250,000 DRs | 54" | BC & CS | Finish-Free, Unbacked | J |
| Mustang 6208 | 12 | Face: 100% Polyurethane (Polycarbonate) Back: 100% Polyester | 250,000 DRs | 54" | BC - CS | Finish-Free | D |
| Precision 6332 | 29 | Face: 90% Clean Performance Urethane, 10% Silicone Back: 100% Polyester | 500,000 DRs | 54" | WS & BC | Unbacked, Finish-Free | D |
| Revolve Print 6972 | 5 | Face: 71% Polyurethane (Polycarbonate), 29% Silicone Back: 100% Polyester | 250,000 DRs | 54" | WS & BC | Unbacked, Finish-Free | J |
| Tartan Print 6016 | 5 | Face: 71% Polyurethane (Polycarbonate), 29% Silicone Back: 100% Polyester | 250,000 DRs | 54" | WS & BC | Unbacked, Finish-Free | J |



***Cleaning Codes:**

WS - Water / Solvent,
WS & BC - Water / Solvent & Bleach
Cleanable
CS - Clean Slate
W - Water

** Results above 100,000 double rubs have not been shown to be a reliable indicator of increased fabric lifespan

Complete product information at carnegiefabrics.com